



YR HACK USB USER GUIDE

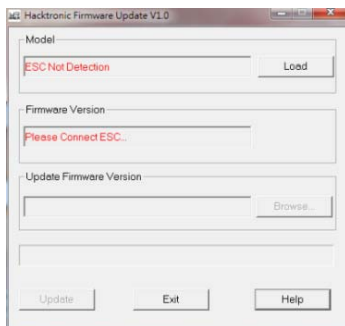
Thank you for purchasing Yeah Racing USB update cable and welcome to convenience of brushless RC. USB update cable is a device for Hacktronic ESC's series firmware upgrade and switching the ESC around from 'Touring', 'Drift' and 'Crawler' Programs.

SETTING UP USB CABLE

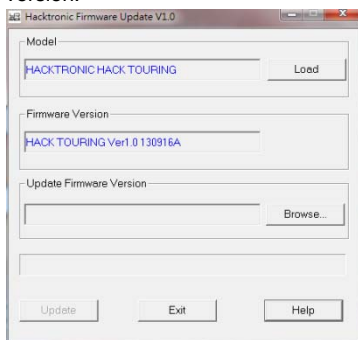
- Before you use YR Hack USB Cable, you must install the YR Hack USB cable software on you PC.
- Download and install the latest version of YR USB Cable link from www.yeahracing.com
- Double click Hacktronic firmware installer icon to run the program install and follow the onscreen instructions in USB installer to complete the installation.

USING USB CABLE

1. Connect the USB cable to a USB port on your PC, then double click the YR USB CABLE icon on the screen to open the software interface.

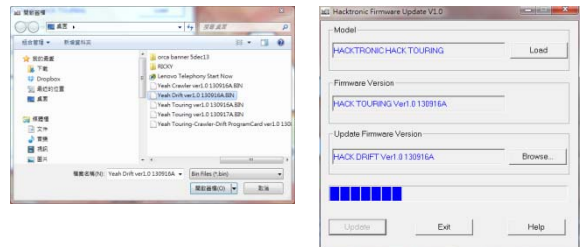


2. Disconnect the ESC's power lead before connecting to the ESC sensor port. The ESC's LED will light up if connected properly and the software will automatically "Load" the original ESC's Model and firmware version.

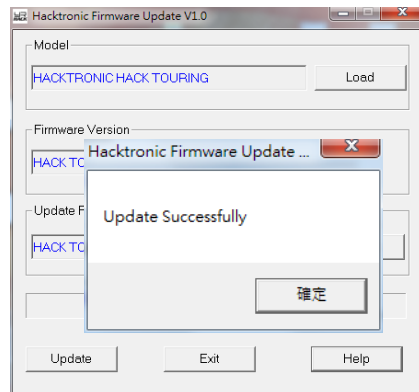


Note: Do not connect ESC's power cable to the batteries

3. Click "Browse" button at the 'Update Firmware Version' column. Select the update firmware file(.bin)and press 'Update'. Red LED on ESC will be flashing during update.



4. "Update Successfully" will show up when the update is done, click "確定"(Yes) and you should indicate the updated firmware version is displayed on the column "Firmware Version". Which indicates the update is completed and you may press "Exit" to leave the program.



LIMITED WARRANTIES

Yeah Racing guarantees this product to be free from defects in materials or workmanship within 30 days from the original date of purchase verified by sales receipt. This limited warranty does not cover damage that are results of normal wear, misuse or improper maintenance of the product.

To avoid unnecessary service and mailing charges, please always eliminate all other possibilities of malfunction. A service fee may be applied if the product that send in for repair is working perfectly.

When returning the product, always pack carefully and includes the original sales receipt, a description of the problem encountered, your return address and contact information.

Since we do not have control over the installation and use of this product, we cannot accept any liability for any damages resulting from the usage or misuse of this product. Therefore, use this product is at your own risk. User has accepts all terms and condition from installing and using of the product.

END